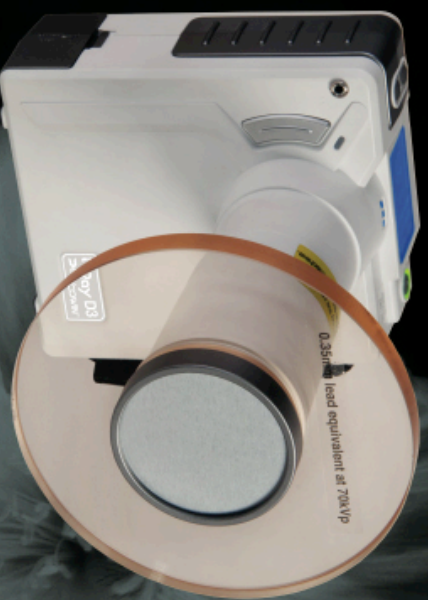


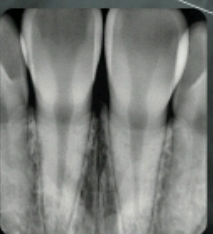
DEXCOWIN®

Portable iRay D3

DENTAL DIGITAL RADIOGRAPHY



- Convenience Of Cordless
Using rechargeable Li-polymer battery-pack
- Great Reduction of X-ray Exposure
Up to 1/7 of existing X-ray systems: 60kV, 2mA
- Adopting High-frequency Circuit of Inverter Type
X-ray System the Most Suitable to Diverse Digital
Sensors.
- Simultaneous use of digital sensor and film
More than 300 Exposures are Possible with One
Time Charging of Battery/
More Compact Size/Weight than Existing Portable
Dental X-ray: 4 lbs.



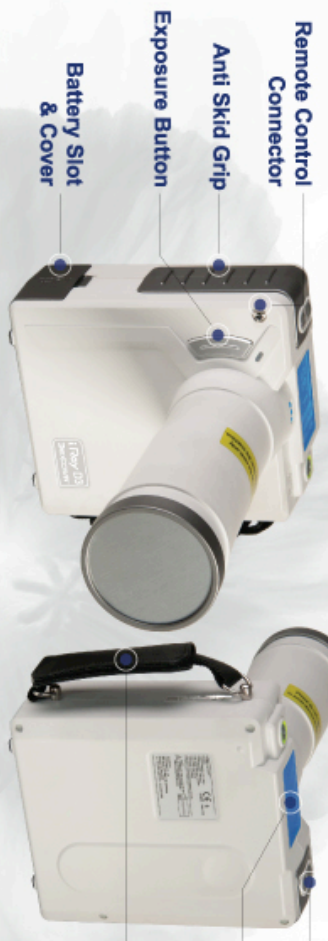
Model iRay D3
X-ray generator Inverter
Tube voltage 60kV(lead)
Tube current 2mA
Tube type Stationary

Tube Focal Spot 0.9mm
Target Angle 20°
Exposure(Increase 0.05sec) 0.05-1.25sec - Digital Sensor
0.20-1.35sec - Film
Power Requirement DC 14.2-16.8V

Weight 4 lbs.
Detector Film / Digital Sensor
Power Supply Rechargeable battery
Display Graphic LCD

www.dexcowin.com

Detail & Accessories



Remote Control Connector

Anti Skid Grip

Exposure Button

Battery Slot & Cover

Time & Mode Control Button

LCD Window

Handle

BACK-SCATTER SHIELD



For Radiation Safety

- Radiation Below Detectable Limit (0.06 mR/hr) @1m from focal Spot
- Leakage far below FDA Limit (25 mR/hr) @1m from focal Spot!
- Radiation: 25 mR/hr @95cm From Accessible Case Surface

REMOTE CONTROL



CARRYING CASE



BATTERY / CHARGER



Use condition
 Max. current : 26 A
 Voltage range : 12V(mv) ~ 16.8MAXV

Material
 Charge Condition
 Current : 1.0 A
 Voltage : 16.8VDC
 Temperature : 0 ~ 40 °C

Full Charging & discharging : 300 times
 Temperature : 0 ~ 40 °C
 Recharging cycle : 1.5 ~ 2.0 hrs

MOBILE STAND

